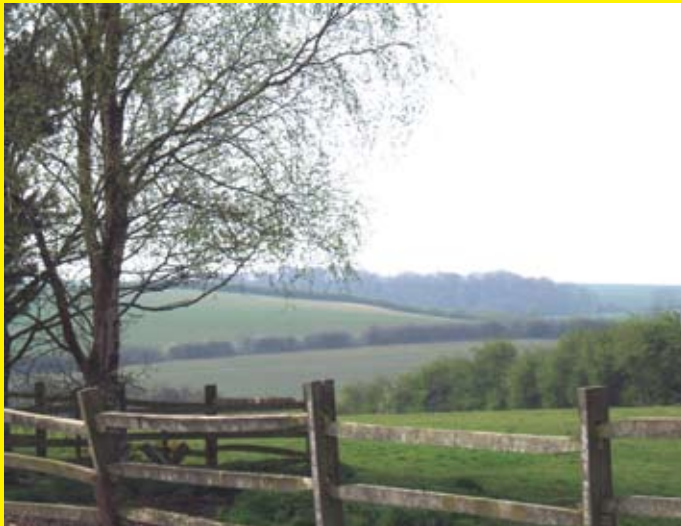


When you've spent a full day walking, sightseeing or shopping till you drop, you will want to be rewarded by perhaps a drink or two and a nice meal, and what better place than Louth to find exactly what you fancy! You will find everything from traditional pub-food, to fish and chips, to Italian, Chinese, Indian, Thai, and Turkish, to high quality English and international cuisine. If after that you can't be bothered with the short walk back to Happyford, you will find the taxi rank across the road from the market place.



If you prefer to relax on site and don't want to cook, there are plenty of take-away options, most of which are situated side by side in Aswell Street, so if you can't agree on what to have, just order one, then go next-door to order the other! All you have to do then is sit back and enjoy the sunset at Happyford!

If you want evening entertainment, Louth has a 3-screen cinema, and the excellent Playgoers Riverhead Theatre which stages frequent national and local productions.

Places to visit within easy reach of Louth are:-

The coast -

Cleethorpes and Skegness (known locally as Skeggy) - traditional 'bucket and spade' and 'ice cream' resorts with picturesque gardens, promenade walks and plenty to do. Anderby Creek and Donna Nook - As far away from a resort as you can get - Lincolnshires' 'wild' coast. Havens for wildlife and places to get away from it all. If you time it right (around November) at Donna Nook, you can see the famous seal colonies with their new-born pups up close in their natural environment.

Grimsby with its excellent Freshney Place shopping centre and attached indoor market, also the National Fishing Heritage Centre, a museum of the towns' fishing roots.

Historic Lincoln with its magnificent cathedral, castle and much, much more.

Whatever you decide to do, we are sure you will have a relaxing and enjoyable stay at Happyford, and we hope we will welcome you back again.

How to find us:-

From the north, turn left off the A16 Louth by-pass at the 2nd turning signposted Louth town centre (not the 1st one which is the B1200). Site is 800 yards on right.

Our Rates

£12 per night, including electric hook-up, and swimming when available (mid-April to October). Please note that at present we do not have changing facilities for you, so you may wish to bring a robe.

Contact Gerry Garside

01507 602612, 07768 158421 (mobile)

e-mail happyford@supanet.com

CARAVAN CLUB MEMBERS ONLY

WELCOME TO HAPPYFORD CL

93 HORNCastle ROAD, LOUTh, LINCOLNSHIRE, LN11 9QT

A tranquil 5-van adult only site in an area of outstanding natural beauty on the edge of the historic market town of Louth. The site offers a choice of grass or hardstanding, and has the benefit of 16-amp electric hook-ups. It boasts uninterrupted views of the beautiful Lincolnshire Wolds, yet is only a 10-15 minute walk from Louth town centre.



The site is a perfect place just to relax and chill out, to enjoy the views or take a stroll along the surrounding tracks. You can spot several species of natural wildlife from the site, including rabbits, pheasants and various birds of prey, so don't forget the binoculars! For a longer walk, very close to the site, visit Louth's famous Hubbards Hills, a pretty valley and superb area of naturally formed parkland with a riverside setting - a perfect place for a picnic and to feed the ducks. For serious walkers, there are many 'Wolds walks' in the near vicinity. For golfers, Louth's top-class 18-hole course is just across the road from the site, and to cool off in the warmer months, you can swim in our outdoor heated pool.



When shopping for food, look out for our local specialities. Our famous Lincolnshire plum bread, a spicy fruit-filled loaf, for which each baker has a closely guarded recipe. Our Lincolnshire cheeses, Poacher and Dambuster, both an excellent accompaniment to the plum bread! And not forgetting our delicious meat products - home-cured ham and bacon, the tasty Lincolnshire pork sausage and our specialities of haslet (dark meat minced with bread and sage) and stuffed chine (ham joints scored and stuffed with fresh parsley).



Our lovely town has a delightful, 'olde worlde' character, with its medieval street pattern, brick Georgian and Victorian buildings, inns and restaurants. It has a wealth of independent shops, offering friendly, personal service - a style of shopping that in many other towns has been swallowed up by uniform shopping malls. Of particular interest is the 'Old Maltings' antique centre situated in Aswell Street, with over 20 traders in one building, spread over 2 floors.

There are some excellent food retailers - butchers, bakers, greengrocers, grocers and fishmongers, all offering superb produce. A colourful street market is held every Wednesday, Friday and Saturday, including on Wednesday mornings the famous 'Cobbles Auction' where you can bid for anything from garden plants to a bicycle to a brace of pheasants! The Fish Shambles' is a cobbled area off the main street, where on market days a wagon comes with fresh fish direct from Grimsby.

If you are looking for more than local produce, visit McLeods, in the shadow of St James church, on Bridge Street, a delicatessen selling a vast range of food and drink products from all over the world.

The old Victorian Market Hall, just off the market place, now home to a single trader, is worth a visit for its 'railway station' architecture.

Louth also boasts of being on the line from which the world time is measured - the Greenwich Meridian of 0 degrees longitude - look out for the plaques and pavement strips on Eastgate, James Street and Kidgate.

The Parish Church of St James has the tallest spire (295 feet) of any medieval parish church in the country. It is a magnificent fifteenth century building, to which thousands of visitors are drawn every year because of its aura of spirituality and architectural beauty. They are welcomed by the church guides, a shop and the possibility of refreshments served under the tower.

Louth museum, on Broadbank has been named a History Tardis - bigger inside than outside! The back-lit Panorama of Louth - one of the best in Europe - is full of colour, humour and life as it depicts a summer's day in the mid-19th century. Learn the true story of Sir John Bolle and the Ghost of the Green Lady, and discover how the people of Louth rose up against the tyranny of King Henry V111. Walk the map of the disastrous Louth Flood of May 1920 which claimed 23 lives. Marvel at the intricate wood carvings of Thomas Wallis and delve among the countless bygones of Louth's industrial and domestic past.